

# Identifying original vs. reproduction front bumpers 1969-1970 Mustang

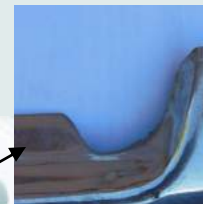
M A R C U S A N G H E L



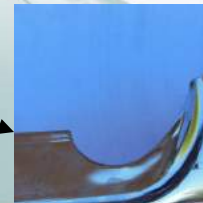
This guide illustrates the differences between an original front bumper and a reproduction bumper. Original bumpers (C9ZZ-17757-A) used by Ford on 1969 and 1970 Mustangs were manufactured by their Monroe Stamping Plant in Monroe, Michigan. The bumpers were stamped with the letter

M as shown in the examples below. This guide will help to easily determine an original while on or off the car. This is especially important for concours judging standards.

Here you can see the difference in the way the bumper is formed in the front license plate bracket area.



Original



Reproduction

**Date Codes and Stampings:** Typical stampings on these bumpers was a month, day, shift (1 thru 3) and year (two digit). Other stamped info might have included production information. The date codes were always stamped on the inside center area of the original bumpers, with typically the day/month/shift information on one side and the year on the other side. These stampings are not easily seen once the bumper is mounted on the car.



Year—1970



October 16, First Shift



November 14, Second Shift



Year—1968

## Full Example:

Month, day, shift information →



← Year, stamping plant information



November 12 1969, Third shift