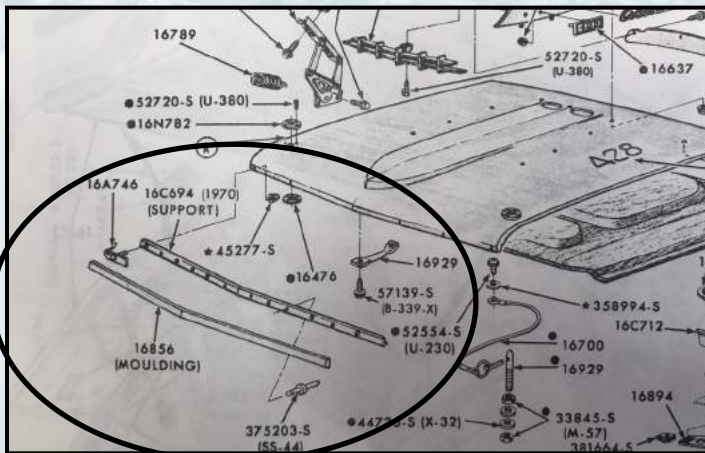


1969 and 1970 Mustang Hood Lip Moulding

MARCUS ANGHEL

Although the shape of the hood on a 1969 and 1970 Mustang is exactly the same, there is a totally different moulding that is used across the front leading edge as well as the hardware associated with this moulding. Shown here on these pages is what was originally installed from the factory, and the differences between the two years, especially what's visible once installed. This guide will help to make sure you are using the correct parts and pieces.

In addition to the difference in the mouldings, in 1970 the Mustangs used an additional "hood front moulding support" that was riveted to the outside of the front of the hood. The excerpt below (from the Master Parts Catalog) and the photos on the next page show this how this piece was attached with three rivets. It was originally galvanized and then painted black, but because of the galvanized finish the black paint would usually flake off, but the correct restored finish is a black semi gloss.



Master Parts Catalog illustration showing part numbers and general installation.

1969 Parts and Part Numbers:

1969 Hood Lip Moulding	C9ZZ-16856-A
Retainer Clip	C9ZZ-16A746-A
Retainer Nut	45277-S36

1970 Parts and Part Numbers:

1970 Hood Lip Moulding	D0ZZ-16856-A
Retainer Clip	D0ZZ-16A746-A
Retainer Nut	384102-S100
Hood Front Moulding Support	D0ZZ-16C694-A
Rivets	375203-S



1969 and 1970 hood lip moulding shown side by side for comparison. The smaller one (above) is for a 1970.

An excellent reproduction of the Hood Lip Moulding support is available today thru Muscle Car Research:

www.musclecarresearch.com

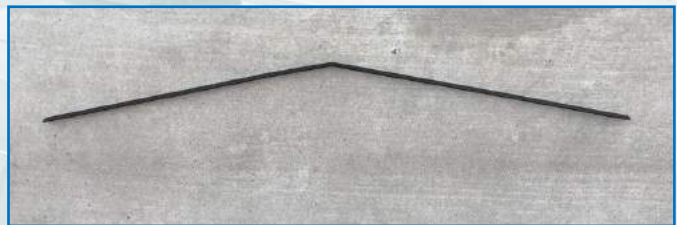
1969 Detail

1970 Detail



Pictures above show the installed hoop lip moulding for 1969 with the correct hardware as well. Retainer nuts are zinc dichromate (gold) and as shown with correct length and style retainer clip.

Images to the right show the 1970 hood lip moulding installed and the corresponding clips and retaining nuts that are also zinc dichromate (gold). Also shown is the front moulding support that is only used on a 1970 and held in place to the hood with three rivets. Note the 1969 and 1970 hardware is completely different and easy to spot the differences once installed and hood is open. And the actual hood lip moulding itself is completely different on the two years.



ANGHEL RESTORATIONS
 Marcus Anghel
 Scottsdale Arizona
 Phone: 602 628 2522
 Website: www.anghelrestorations.com