

1965 to 1973 Windshield Washer Nozzles

M A R C U S A N G H E L

Its hard to imagine with all the technology we have in cars today, how some of the standard features we have were actually options at one time. We expect things like backup lights, rear view mirrors, and even radios as standard and necessary on a car. But the truth is that these were all options at one time, as were many others. One of these is the windshield washers that actually were not standard on the early Mustangs up to and including the 1965 model year. On these early cars it was an option. Then starting in 1966 they became standard equipment that was installed on every Mustang.

This short guide will show the differences and changes thru the model years and also show the correct finishes for those looking to have the correct part installed... especially for cars that would be judged. The Master Parts Catalog calls these a "Jet and Bracket Assembly—Windshield Washer Nozzle".

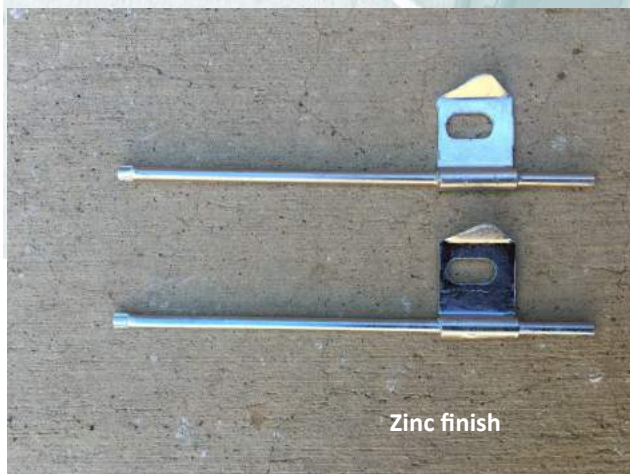
1965 C5ZZ-17603-D



1965—Typical Install



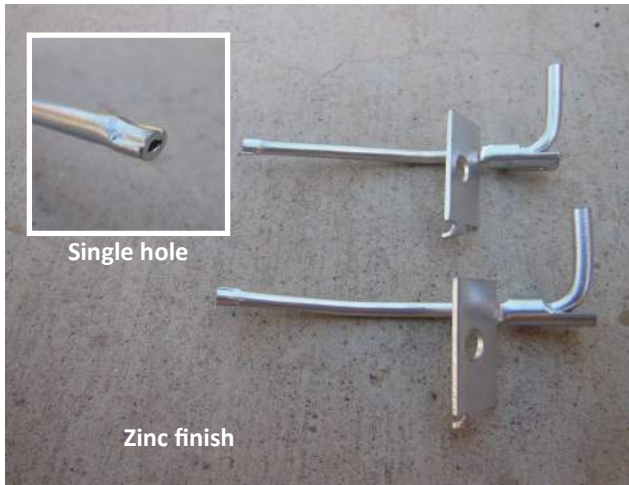
1966 C5ZZ-17603-E



1966—Typical Install



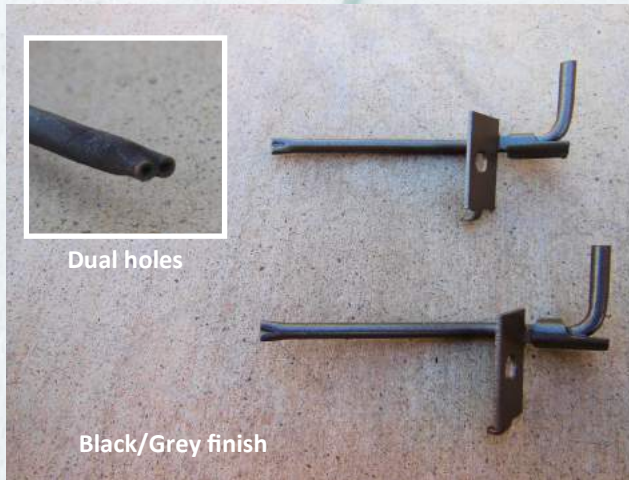
1967 C7ZZ-17603-A (before April 4 1967)



1967—Typical Install



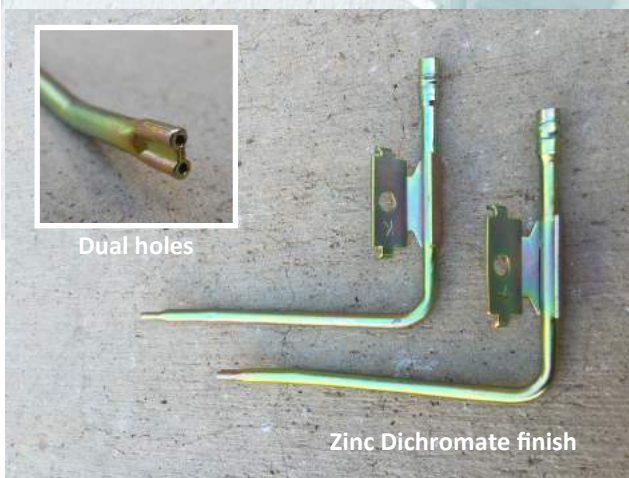
1967 - 1968 C7ZZ-17603-B (after April 4 1967)



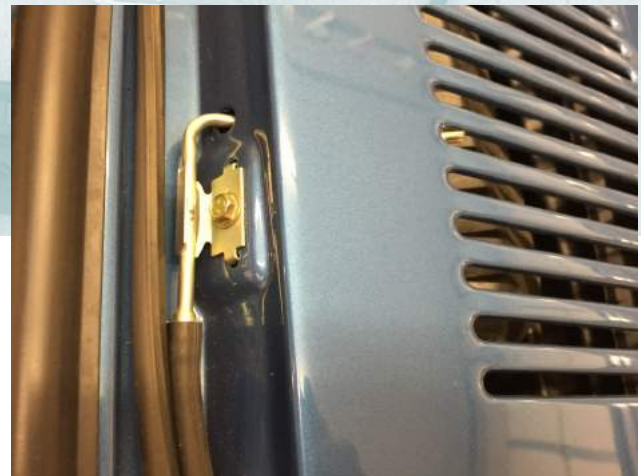
1968—Typical Install



1969 C9ZZ-17603-A (used till Sept 2 1969)



1969—Typical Install



1970 D0ZZ-17603-A (used after Sept 2 1969)



1970—Typical Install



1971-1973

D1ZZ-17603-A (left side) D1ZZ-17603-B (right side)



1971 –1973—Typical Install



Note: The most accurate reproduction washer hose available today (with ribbing as shown here) is available from Deadnutson.com website. Not all cars, all years, used this hose, but for those that did this is an excellent replacement.



Special thanks for their contributions: Scott Fuller, Scott Skalitzky, Mike Murray, Bruce Klier, Charles Turner, and Marty Rupp.

**A N G H E L
R E S T O R A T I O N S**

Marcus Anghel
Scottsdale Arizona

Phone: 602 628 2522

Website: www.anghelrestorations.com

E-mail: marcus@anghelrestorations.com